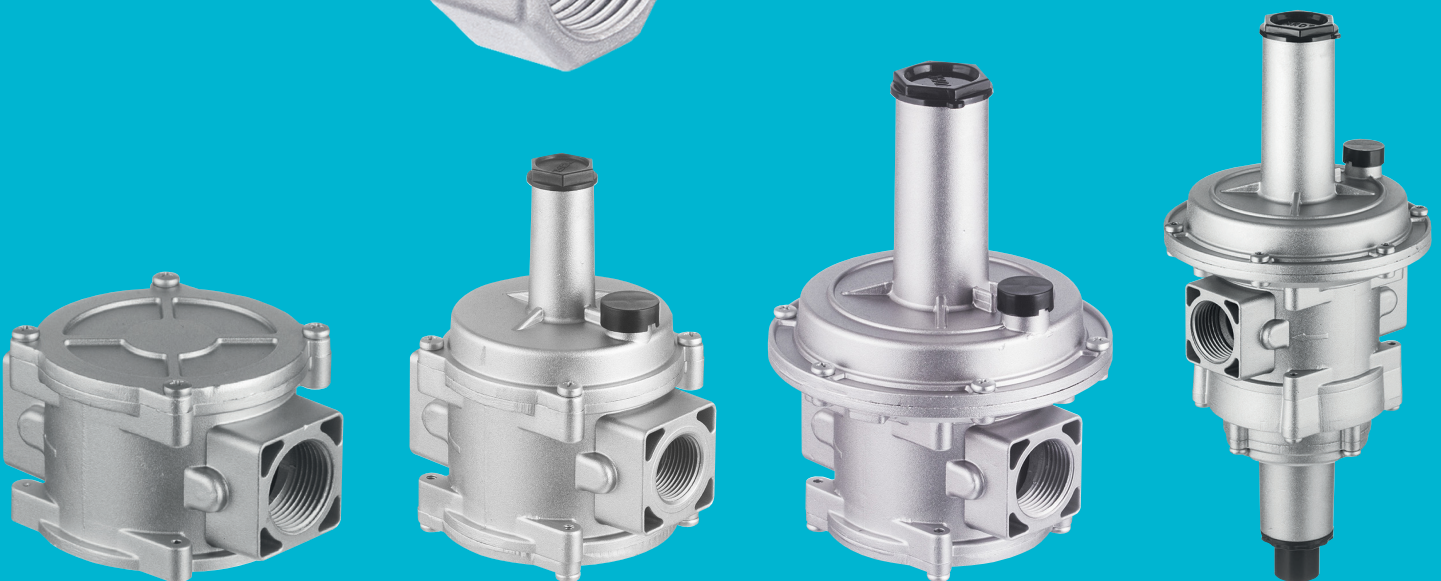




## NATURAL GAS PRODUCT

*solenoid valves, filter and regulators,  
gas alarm controller, natural gas, LPG-LNG*



## Natural Gas Filters / Natural Gas Regulators

### GF 10, GR 20, GR 30, GR 60

#### GF 10 Series Natural Gas Filters

Natural gas, LPG, methane, propane, butane, city gas, air, non-aggressive gases

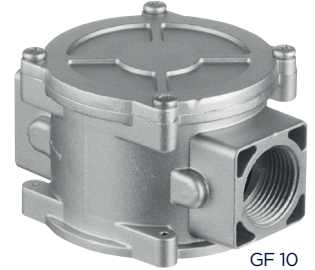
Body : Die-cast aluminium

Ambient Temperature : -10°C / +50°C

Max. Pressure : 6 bar

Flow rate measured at  $\Delta P = 10$  mbar

Model No	Connection Size	Orifice	Pressure		Flow	Fluid Temperature		Diaphragm
			bar min	bar max		m <sup>3</sup> /h	°C min	
GF 10.03	1/2"	15	0	6	20	-10	80	NBR
GF 10.04	3/4"	20	0	6	40	-10	80	NBR
GF 10.05	1"	25	0	6	60	-10	80	NBR
GF 10.06	1 1/4"	32	0	6	125	-10	80	NBR
GF 10.07	1 1/2"	40	0	6	145	-10	80	NBR
GF 10.08	2"	50	0	6	190	-10	80	NBR



GF 10

#### GR 20 Series Emergency Relief Natural Gas Regulator (Max. Input Pressure 0,5 bar)

Natural gas, methane, propane, butane, city gas, air, non-aggressive gases

Body : Aluminium

Ambient Temperature : -10°C / +50°C

Max. Input Pressure : 0.5 bar

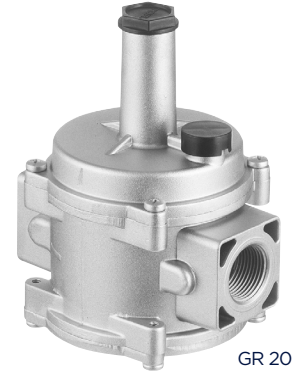
Output Pressure

Adjustment Range : 8-98 mbar

Flow rate measured at  $\Delta P = 10$  mbar

Regulator output pressure is customized by the manufacturer considering the customer's applications.

Model No	Connection Size	Flow	Weight
GR 20	G"	m <sup>3</sup> /h	kg
GR 20.03	1/2"	10	0.72
GR 20.04	3/4"	15	0.75
GR 20.05	1"	20	0.78



GR 20

#### GR 30 Series Filtered Natural Gas Regulators, (Max. Input Pressure 1 bar)

Natural gas, methane, propane, butane, city gas, air, non-aggressive gases

Body : Aluminium

Ambient Temperature : -10°C...+50°C

Max. Input Pressure : 1 bar

Output Pressure

Adjustment Range : 10-500 mbar

Flow rate measured at  $\Delta P = 10$  mbar

Regulator output pressure is customized by the manufacturer considering the customer's applications.

Model No	Connection Size	Flow	Weight
GR 30	G"	m <sup>3</sup> /h	kg
GR 30.03	1/2"	20	1.20
GR 30.04	3/4"	25	1.16
GR 30.05	1"	35	1.11
GR 30.06	1 1/4"	85	3.20
GR 30.07	1 1/2"	85	3.19
GR 30.08	2"	135	3.28



GR 30

#### GR 60 Series, Shut-Off Type Filtered Natural Gas Regulators (Max. Input Pressure 1 bar)

Natural gas, methane, propane, butane, city gas, air, non-aggressive gases

Body : Aluminium

Ambient Temperature : -10°C...+50°C

Max. Input Pressure : 1 bar

Output Pressure

Adjustment Range : 10-500 mbar

Flow rate measured at  $\Delta P = 10$  mbar

Regulator output pressure is customized by the manufacturer considering the customer's applications.

Model No	Connection Size	Flow	Weight	Output Pressure
GR 60	G"	m <sup>3</sup> /h	kg	
GR 60.03	1/2"	20	1.90	8-14 mbar
GR 60.04	3/4"	25	1.87	14- 25 mbar
GR 60.05	1"	35	1.83	25 - 68 mbar
GR 60.06	1 1/4"	85	3.20	120- 180 mbar
GR 60.07	1 1/2"	85	3.19	320 - 450 mbar
GR 60.08	2"	135	3.28	



GR 60



## Natural Gas Solenoid Valves

### S8011, S8086, TORK-FDV, S8079

#### S8011 Series, 2/2 Way, Manuel Reset Natural Gas Valves, Normally Open

Natural gas, methane, propane, butane, city gas, air, non-aggressive gases

**Body** : Aluminium, internal parts stainless steel and brass

**Standard Voltages** : AC 12V, 24V, 48V, 110V, 230V  
DC 12V, 24V, 48V, 110V

**Ambient Temperature** : -10 °C/50 °C

Please specify the coil type and voltage on your request.

For earthquake detector, coil voltage must be 12 VDC, for gas alarm application should be 230 V AC

Please avoid demounting coil and armature

On request exproof coil

In case of receiving a signal from the earthquake detector, valve is closed, can be opened manually

Flow rate measured at  $\Delta P= 10$  mbar

Model No	Connection Size	Orifice	Pressure		Flow	Fluid Temperature		Diaphragm
			bar min	bar max		°C min	°C max	
S 8011.02	3/8"	24	0	0.5	10	-10	80	NBR
S 8011.03	1/2"	24	0	0.5	14	-10	80	NBR
S 8011.04	3/4"	24	0	0.5	32	-10	80	NBR
S 8011.05	1"	24	0	0.5	38	-10	80	NBR
S 8011.06	1 1/4"	40	0	0.5	105	-10	80	NBR
S 8011.07	1 1/2"	40	0	0.5	125	-10	80	NBR
S 8011.08	2"	50	0	0.5	145	-10	80	NBR



S8011

#### S8086 Series, 2/2 Way, Manuel Reset, Permanent Circuit Natural Gas Solenoid Valves, Normally Closed Loop.

Natural gas, methane, propane, butane, city gas, air, non-aggressive gases

**Body** : Aluminium, internal parts stainless steel and brass

**Ambient Temperature** : -10 °C/50 °C

This product is available for 230 V AC can be used with special socket converter

Please specify the coil type and voltage on your request.

For earthquake detector, coil voltage must be 12 VDC, for gas alarm application should be 230 VAC

Please avoid demounting coil and armature

On request exproof coil

In a case of a power failure, signal received by solenoid valve flow cut off.

Flow rate measured at  $\Delta P= 10$  mbar

Model No	Connection Size	Orifice	Pressure		Flow	Fluid Temperature		Diaphragm
			bar min	bar max		°C min	°C max	
S 8086.02	3/8"	24	0	0.5	10	-10	80	NBR
S 8086.03	1/2"	24	0	0.5	14	-10	80	NBR
S 8086.04	3/4"	24	0	0.5	32	-10	80	NBR
S 8086.05	1"	24	0	0.5	38	-10	80	NBR



S8086

#### Mechanic Earthquake Valve (Sismic Valve)

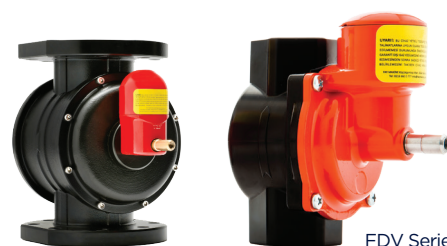
Natural gas, methane, propane, butane, city gas, air, non-aggressive gases

**Body** : Aluminium (Internal Parts Brass and Stainless Steel)

**Working Temperature** : 60 °C

**Fluid** : Natural Gas, LPG, Methane, Propane etc.

Model No	Size	Pressure
	G"	Bar
TORK-FDV 25	1"	0-500
TORK-FDV 32	1 1/4"	0-500
TORK-FDV 40	1 1/2"	0-500
TORK-FDV 50	2"	0-500



FDV Series

#### S8079 Series, 2/2 Way, Manuel Reset, Flanged Natural Gas Valves, Normally Open

Natural gas, methane, propane, butane, city gas, air, non-aggressive gases

**Body** : Aluminium, internal parts stainless steel and brass

**Standard Voltages** : AC 12V, 24V, 48V, 110V, 230V  
DC 12V, 24V, 48V, 110V

**Ambient Temperature** : -10 °C/50 °C

Please specify the coil type and voltage on your request.

For earthquake detector, coil voltage must be 12 VDC, for gas alarm application should be 230 V AC

Please avoid demounting coil and armature On request exproof coil

In case of receiving a signal from the earthquake detector, valve is closed, can be opened manually

Flow rate measured at  $\Delta P= 10$  mbar

Model No	Connection Size	Orifice	Pressure		Flow	Fluid Temperature		Diaphragm
			bar min	bar max		°C min	°C max	
S 8079.09	2 1/2"	65	0	6	300	-10	80	NBR
S 8079.10	3"	80	0	6	450	-10	80	NBR
S 8079.12	4"	100	0	6	600	-10	80	NBR



S8079



# Natural Gas Pressure Switches and Controller / Gas And Propane Regulators

## TORK-901, GA10, GA20,GA21, P-38, P-39, P-627

### TORK-901 Series Natural Gas Pressure Switches P max. 500mbar

Natural gas, LPG, methane, propane, air, non-aggressive gases

**Connection** : G 1/4", G 1/8", G 1/2" (metric thread and tube connection)

**Body** : Brass (on request stainless steel)

Exproof types are available. On request can be modified for vacuum.

Brass or stainless steel body, thread connection

Model No	Control Range	Orifice	Contact
TORK-901	mbar	mm	
TORK-901.61	5 ... 20 mbar	1/4"	SPDT
TORK-901.62	10 ... 50 mbar	1/4"	SPDT
TORK-901.63	25 ... 100 mbar	1/4"	SPDT
TORK-901.64	50 ... 250 mbar	1/4"	SPDT
TORK-901.65	100 ... 500 mbar	1/4"	SPDT
TORK-901.66	250 ... 1000 mbar	1/4"	SPDT
TORK-901.67	500 ... 1500 mbar	1/4"	SPDT
TORK-901.68	1000 ... 3000 mbar	1/4"	SPDT
TORK-901.91	1 ... 6 bar	1/4"	SPDT
TORK-901.92	4 ... 9 bar	1/4"	SPDT
TORK-901.93	7 ... 12 bar	1/4"	SPDT



TORK 901

### TORK-GA and TORK-ExGA 101 Series Normal and Exproof Natural Gas Alarm Controller

Standart and Exproof Natural Gas Alarm Detector

Type No	TORK-GA 10	TORK-GA 20, TORK-GA 21
TSE Standard	TS EN50194	TS EN 50014-TS EN50194
Type of the device	A type (Alarm contact output)	
Working Voltage	220, 230 V 50/60Hz	
Output Power	220V, 230V, 7 A	
Loudness Level	85dB	
Calibration Time	1.5 minutes	
Power Consumption	4watt	
Sensor	Semi Conductor	
Output	Normally Open SPST (on request SPDT)	
Weight	0.28 kg	0.75 kg



GA 20

GA 10

GA 21

### Gas and Propane Regulators Max. Input Pressure 28 bar (400 psi) (High Pressure)

Type	Connection Size (NPT)	Max Input Pressure	Output Pressure Range	Body Material	Seal
P-38	3/8"	28 bar	0-2 bar (0-30 psi)	Aluminium	Nitrile Elastomer
	1/2"		0-4.1 bar (0-60 psi)		
	3/4"		0-8.6 bar (0-125 psi)		
	1"				



P-38

### Gas and Propane Regulators Max. Input Pressure 379 bar (5500 psi) (High Pressure)

Type	Connection Size (NPT)	Max Input Pressure	Output Pressure Range	Body Material	Seal
P-39	1/4"	28 bar	0-4.1 bar (0-60 psi)	Brass, On request 316 Stainless Steel or Nickel plated brass, On request PTFE or TFE diaphragm	Nylon
			0-8.3 bar (0-120 psi)		
			0-10.3 bar (0-150 psi)		
			0-15.5 bar (0-225 psi)		



P-39

### Gas and Propane Regulators Max. Input Pressure 379 bar (5500 psi) (High Pressure)

Type	Connection Size (NPT)	Max Input Pressure	Output Pressure Range	Body Material	Seal
P-627	3/4"NPT	2000 PSIG (138 BAR)	5 PSI - 500 PSI (0.34 BAR - 34.5 BAR)	Steel Cast Ductile Iron	Nylon
	1" NPT				Nitrile
	2" NPT				Fluorocarbon

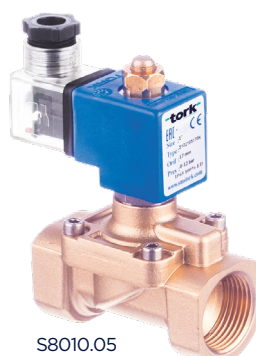


P-627

## Solenoid Valves (Brass Body) S8010, S8012 & S8014, S8013

### S8010 Series, Direct Operated and Pilot Operated Natural Gas Solenoid Valves, Normally Closed

Model No	Connection Size	Orifice	Pressure	Kv
S8010	G"	mm	bar	lt/min
S8010.00.040	1/8"	4	0-9	6.4
S8010.01.040	1/4"	4	0-9	6.4
S8010.02	3/8"	12.5	0.5-16	48
S8010.03	1/2"	14.5	0.5-16	70
S8010.04	3/4"	17	0.5-16	90
S8010.05	1"	17	0.5-16	90



S8010.05

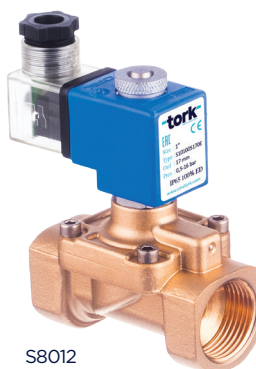


NORMALLY CLOSED  
2/2 WAY

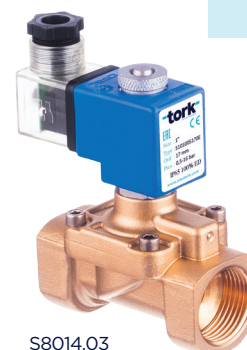
S8010.00.040

### S8012 & S8014 Series, Natural Gas Solenoid Valve, Normally Open

Model No	Connection Size	Orifice	Pressure	Q
S8012	G"	mm	bar	m <sup>3</sup> /h
S8012.02	3/8"	24	0-2	10
S8012.03	1/2"	24	0-2	14
S8012.04	3/4"	24	0-2	32
S8012.05	1"	24	0-2	38
S8014				
S8014.03	1/2"	24	0-4	14



S8012

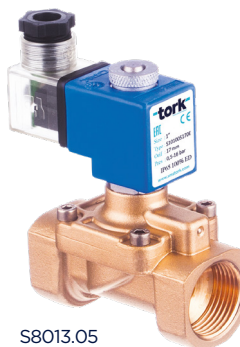


NORMALLY OPEN  
2/2 WAY

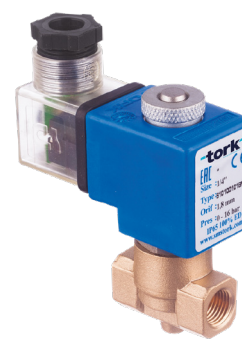
S8014.03

### S8013 Series, High Pressure Natural Gas and LNG Solenoid Valves, Normally Closed

Model No	Connection Size	Orifice	Pressure	Kv
S8013	G"	mm	bar	lt/min
S8013.00.010	1/8"	1	0-100	6.4
S8013.00.018	1/8"	1.8	0-50	6.4
S8013.00.025	1/8"	2.5	0-20	48
S8013.01.010	1/4"	1	0-100	70
S8013.01.018	1/4"	1.8	0-50	90
S8013.01.025	1/4"	2.5	0-20	90
S8013.02	3/8"	12.5	0.5-40	48
S8013.03	1/2"	14.5	0.5-40	70
S8013.04	3/4"	17	0.5-40	90
S8013.05	1"	17	0.5-40	90



S8013.05



NORMALLY CLOSED  
2/2 WAY

S8013.00.010

# Exproof Solenoid Valves And Pneumatic Actuated Valves (Natural Gas And Lpg) SX1010, SX1020, SX1030, SX1060

## SX1010 Series Direct and Pilot Operated General Purpose Ex-Proof Solenoid Valves, Normally Closed

Model No	Connection Size	Body Material	Orifice	Pressure	Temperature	Kv
S8013	G"		mm	bar		lt/min
SX1010.00.018	1/8"	Brass	1.8	0-16	80 °C	1.6
SX1010.01.025	1/4"		2.5	0-12		3.2
SX1010.02	3/8"		12.5	0.5-16		48
SX1010.03	1/2"		14.5	0.5-16		70
SX1010.04	3/4"		17	0.5-16		90
SX1010.05	1"		17	0.5-16		90
SX1010.06	1 1/4"		46	0.5-12		250
SX1010.07	1 1/2"		46	0.5-12		370
SX1010.08	2"		46	0.5-12		450



SX1010

NORMALLY CLOSED  
2/2 WAY



**Note:** Exproof coils are EEx emllT4/T5, maximum surface temp. 100 °C-135 °C, suitable for use in zone 1-2 and TSE certified.

## SX1020 Series Low Pressure Differential, Pilot Operated General Purpose Ex-Proof Solenoid Valves, Normally Closed

Model No	Connection Size	Body Material	Orifice	Pressure	Temperature	Kv	Operating Voltage
SX1020	G"		mm	bar		lt/min	
SX1020.02	3/8"	Brass	12.5	0.35-12	80 °C	48	220V AC 110V AC 24VAC 12VAC 24V DC 12V DC
SX1020.03	1/2"		14.5	0.35-12		70	
SX1020.04	3/4"		17	0.35-12		90	
SX1020.05	1"		17	0.35-12		90	
						90	



SX1020

NORMALLY CLOSED  
2/2 WAY



**Note:** Exproof coils are EEx emllT4/T5, maximum surface temp. 100 °C - 135 °C, suitable for use in zone 1-2.

## SX1030 Series Direct and Pilot Operated Ex-Proof General Purpose Solenoid Valves, Normally Closed

Model No	Connection Size	Body Material	Orifice	Pressure	Temperature	Kv	Operating Voltage
SX1030	G"		mm	bar		lt/min	lt/min
SX1030.02	3/8"	Brass	12.5	0.35-16	80 °C	48	220V AC 110V AC 24VAC 12VAC 24V DC 12V DC
SX1030.03	1/2"		12.5	0.35-16		70	
SX1030.04	3/4"		20	0.5-16		90	
SX1030.05	1"		25	0.5-16		90	
SX1030.06	1 1/4"		46	0.5-12		250	
SX1030.07	1 1/2"		46	0.5-12		370	
SX1030.08	2"		46	0.5-12		450	
SX1030.09	2 1/2"		65	1-6		580	
SX1030.10	3"		80	1-6		700	



SX1030

NORMALLY CLOSED  
2/2 WAY



**Note:** Exproof coils are EEx emllT4/T5, maximum surface temp. 1 DOT-135°C, suitable for use in zone 1-2.

## SX1060 Series Direct and Pilot Operated General Purpose Ex-Proof Solenoid Valves, Normally Open, (5 W Coil)

Model No	Connection Size	Body Material	Orifice	Pressure	Temperature	Kv	Operating Voltage
SX1060	G"		mm	bar		lt/min	
SX1060.00.018	1/8"	Brass	1.8	0-16	80 °C	1.6	220V AC 110V AC 24VAC 12VAC 24V DC 12V DC
SX1060.01.018	1/4"		1.8	0-16		1.6	
SX1060.02	3/8"		12	0.35-12		40	
SX1060.03	1/2"		12	0.35-12		58	
SX1060.04	3/4"		15	0.35-12		75	
						75	



SX1060

NORMALLY OPEN  
2/2 WAY



**Note:** Exproof coils are EEx emllT4/T5, maximum surface temp. 100 °C - 135 °C, suitable for use in zone 1-2.



## Pneumatic Actuated Valves (Natural Gas And Lpg)

### PAV909, PAV9010, PAV912

#### PAV 909. SR and PAV 909. DA Series, Pneumatic Actuated Monoblock Stainless Steel Ball Valve

Natural gas, LPG, water, steam etc

**Ball Valve** : DN15 .... DN100 Stainless Steel (full bore)

**Operating Temp.** : -30 ... +180 °C

**Pressure** : PN 16bar and PN 40 bar

**Actuator** : RA. DA and RA. SR series

DA: Double acting / SR: Single acting

Model Number/ Order Number	Connection
PAV909	G"
PAV909.15 DA/SR	DN15
PAV909.20 DA/SR	DN20
PAV909.25 DA/SR	DN25
PAV909.32 DA/SR	DN32
PAV909.40 DA/SR	DN40
PAV909.50 DA/SR	DN50
PAV909.65 DA/SR	DN65
PAV909.80 DA/SR	DN80
PAV909.100 DA/SR	DN100



PAV 909

#### PAV 910. SR and PAV 910. DA Series, Pneumatic Actuated, Monoblock Carbon Steel Ball Valve

Natural gas, LPG, water, steam etc.

**Ball Valve** : DN15 .... DN100 Carbon Steel (full bore)

**Operating Temp.** : -30 ... +180 °C

**Pressure** : PN 16bar and PN 40 bar

**Actuator** : RA. DA and RA. SR series

DA: Double acting / SR: Single acting

Model Number/ Order Number	Connection
PAV910	G"
PAV910.15 DA/SR	DN15
PAV910.20 DA/SR	DN20
PAV910.25 DA/SR	DN25
PAV910.32 DA/SR	DN32
PAV910.40 DA/SR	DN40
PAV910.50 DA/SR	DN50
PAV910.65 DA/SR	DN65
PAV910.80 DA/SR	DN80
PAV910.100 DA/SR	DN100



PAV910

#### PAV 912F. SR and PAV 912F. DA Series, Pneumatic Actuated, 2/2 Way Natural Gas Ball Valve

Natural gas, LPG, water, steam etc.

**Ball Valve** : DN15 .... DN250, (full bore)

**Operating Temp.** : -30 ... +180 °C

**Pressure** : PN 16bar and PN 40 bar

**Actuator** : RA. DA and RA. SR series

DA: Double acting / SR: Single acting

Model Number/ Order Number	Connection
PAV912	G"
PAV912.15 DA/SR	DN15
PAV912.20 DA/SR	DN20
PAV912.25 DA/SR	DN25
PAV912.32 DA/SR	DN32
PAV912.40 DA/SR	DN40
PAV912.50 DA/SR	DN50
PAV912.65 DA/SR	DN65
PAV912.80 DA/SR	DN80
PAV912.100 DA/SR	DN100
PAV912.120 DA/SR	DN120
PAV912.200 DA/SR	DN200
PAV912.250 DA/SR	DN250



PAV912

# tork

valve & automation

**HEAD OFFICE** Bostancı Yolu Cad, Kuru Sok, No16 Y. Dudullu, 34776 Ümraniye İstanbul - TURKEY **P** +90 216 364 34 05 **F** +90 216 364 37 57  
**FACTORY** Çerkeşli OSB Mah. İmes-2 Cad. No 5 Dilovası Kocaeli TURKEY **P** +90 262 290 20 20 **F** +90 262 290 20 21  
**SMS-TORK Endüstriyel Otomasyon Ürünleri San. Tic. Ltd. Şti.** [f/SMSTORK](#) [in/sms-tork](#) [www.smstork.com](http://www.smstork.com)

**BOX:** 266 P.C:329, Sultanate of Oman

**Yanqul**

**GSM:** 97360044 / 97964466

**Al Rustaq**

**GSM:** 95570574 / 92158128

**Muscat / Mabela**

**GSM:** 97964477 / 95436918

